

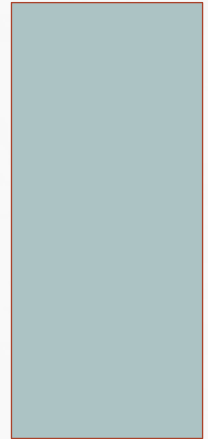
# „LIVING CONDITIONS OF FAMILIES IN EUROPE“

**PROF. BEAT FUX**  
UNIVERSITY OF SALZBURG

## ***FAMILY POLICIES MATTER!***

*NATIONAL POLICIES AGAINST POVERTY AND SOCIAL EXCLUSION OF FAMILIES*

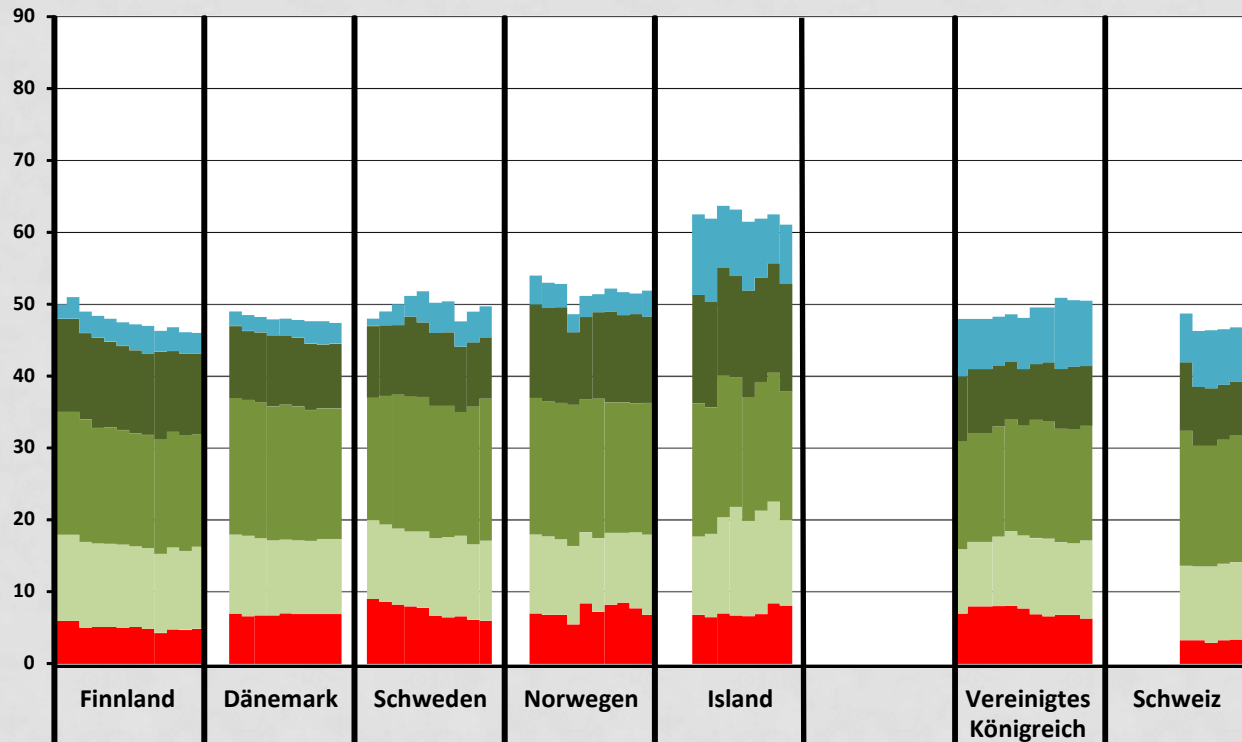
CONTRIBUTION TO THE CARITAS SYMPOSIUM ON FAMILY POLICIES FROM FOUR EU MEMBER STATES  
BRUSSELS, 22<sup>ND</sup> AND 23<sup>RD</sup> JANUARY 2014



# CONTENT

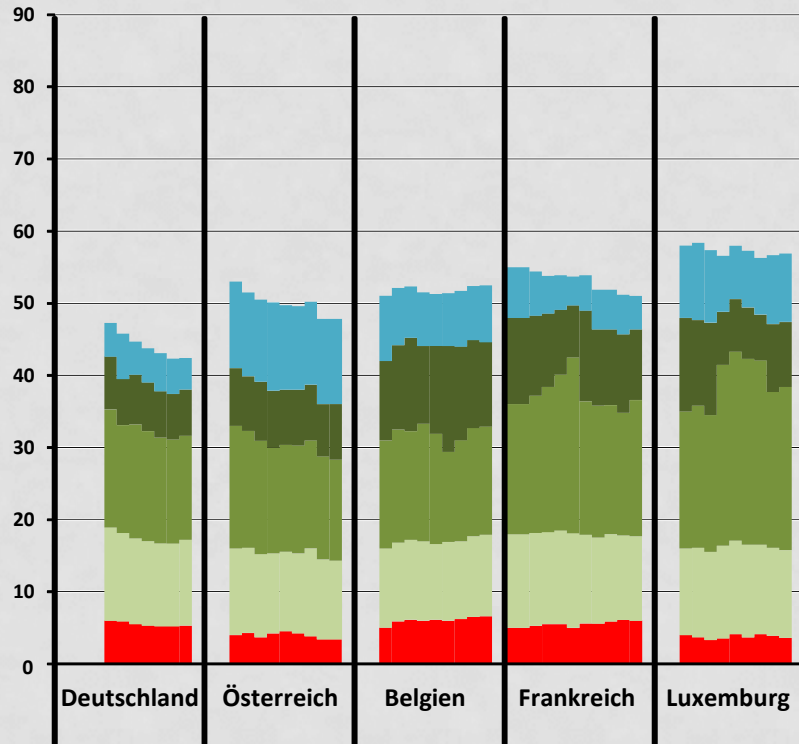
- *Which social and family policies effectively improve the situation of families, especially of the most deprived parents and children like single parents (mostly mothers), families with more than two children and families with a migration background?*
- *Einbettung und Kontrastierung der vier nationalen Familienpolitiken in den europäischen Zusammenhang vor dem Hintergrund aktueller Erklärungsansätze und empirischer Befunde.*
- *Portätierung der Lebenslage von Familien in vergleichender Perspektive unter Berücksichtigung der methodischen Schwierigkeiten solcher Vergleiche und*
- *Evaluation der Möglichkeiten und Probleme der jeweiligen nationalen familienpolitischen Entwicklungspfade.*
  
- *Polarization of living arrangements (Modernisation)*
- *Process-oriented (Second demographic transition, life-course)*

# HOUSEHOLD STRUCTURES: NORDIC AND LIBERAL C.



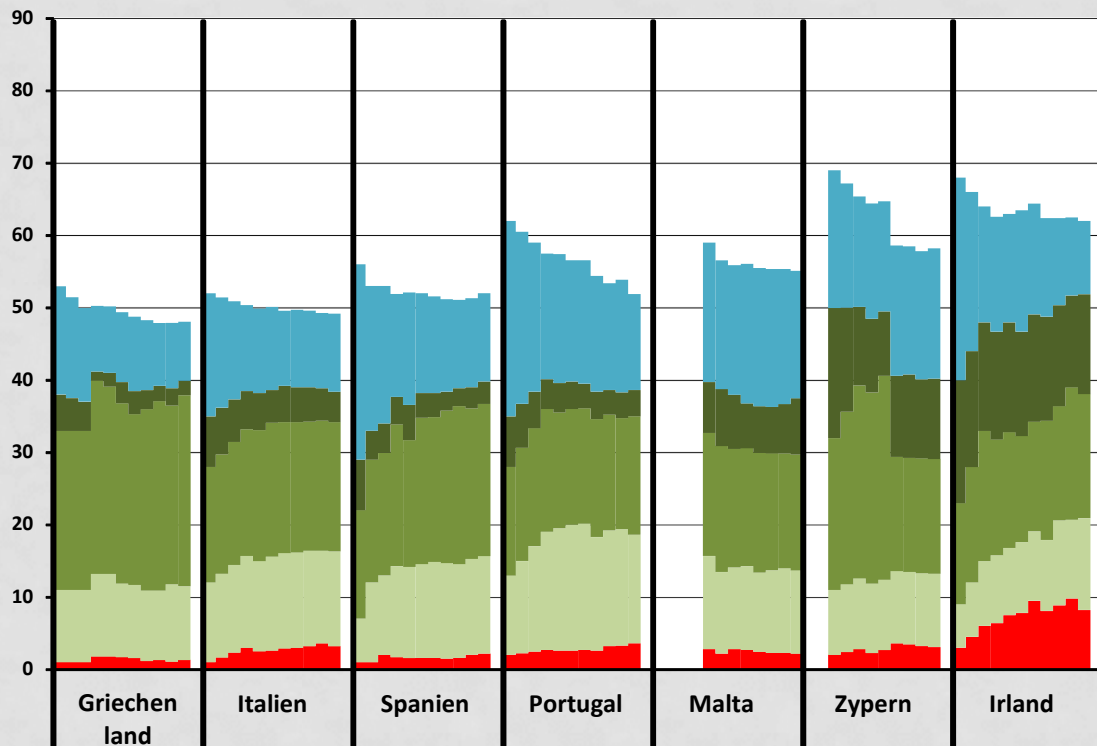
- Drei oder mehr Erwachsene mit abhängigen Kindern
- Zwei Erwachsene mit drei oder mehr abhängigen Kindern
- Zwei Erwachsene mit zwei abhängigen Kindern
- Zwei Erwachsene mit einem abhängigen Kind
- Alleinstehende Person mit abhängigen Kindern

# HOUSEHOLD STRUCTURES: WESTEUROPEAN C.



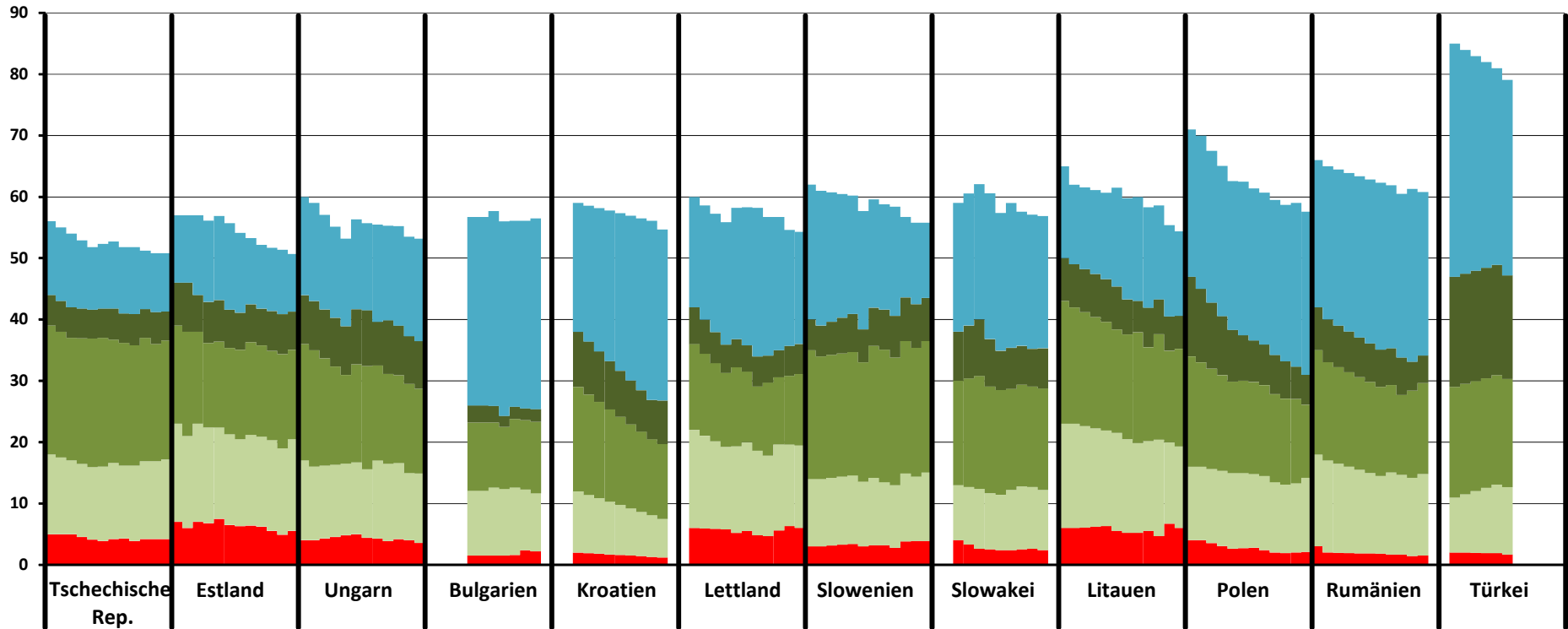
- Drei oder mehr Erwachsene mit abhängigen Kindern
- Zwei Erwachsene mit drei oder mehr abhängigen Kindern
- Zwei Erwachsene mit zwei abhängigen Kindern
- Zwei Erwachsene mit einem abhängigen Kind
- Alleinstehende Person mit abhängigen Kindern

# HOUSEHOLD STRUCTURES: SOUTHERN EUROPE



- Drei oder mehr Erwachsene mit abhängigen Kindern
- Zwei Erwachsene mit drei oder mehr abhängigen Kindern
- Zwei Erwachsene mit zwei abhängigen Kindern
- Zwei Erwachsene mit einem abhängigen Kind
- Alleinstehende Person mit abhängigen Kindern

# HOUSEHOLD STRUCTURES: EASTERN EUROPE



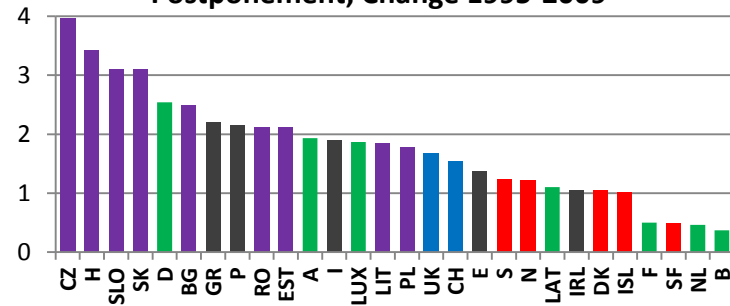
- Drei oder mehr Erwachsene mit abhängigen Kindern
- Zwei Erwachsene mit drei oder mehr abhängigen Kindern
- Zwei Erwachsene mit zwei abhängigen Kindern
- Zwei Erwachsene mit einem abhängigen Kind
- Alleinstehende Person mit abhängigen Kindern

# POLARIZATION 1: CHILD/NO-CHILDREN

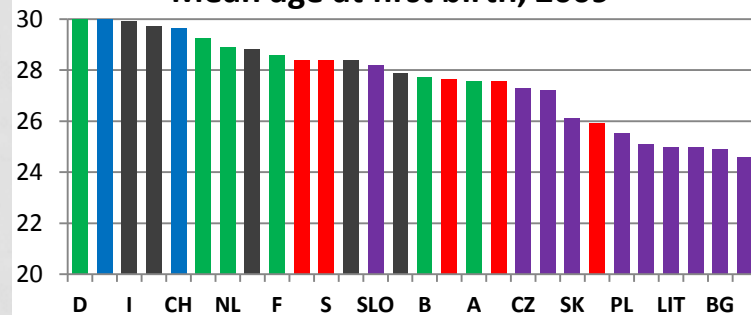


- Nordic countries
- Liberal States
- Western Europe
- Southern Europe
- Eastern Europe

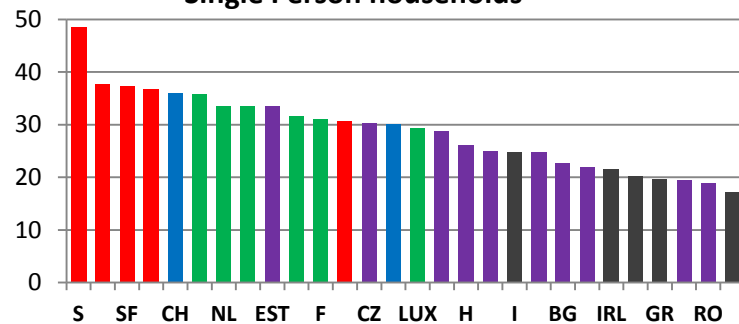
Postponement, Change 1995-2009



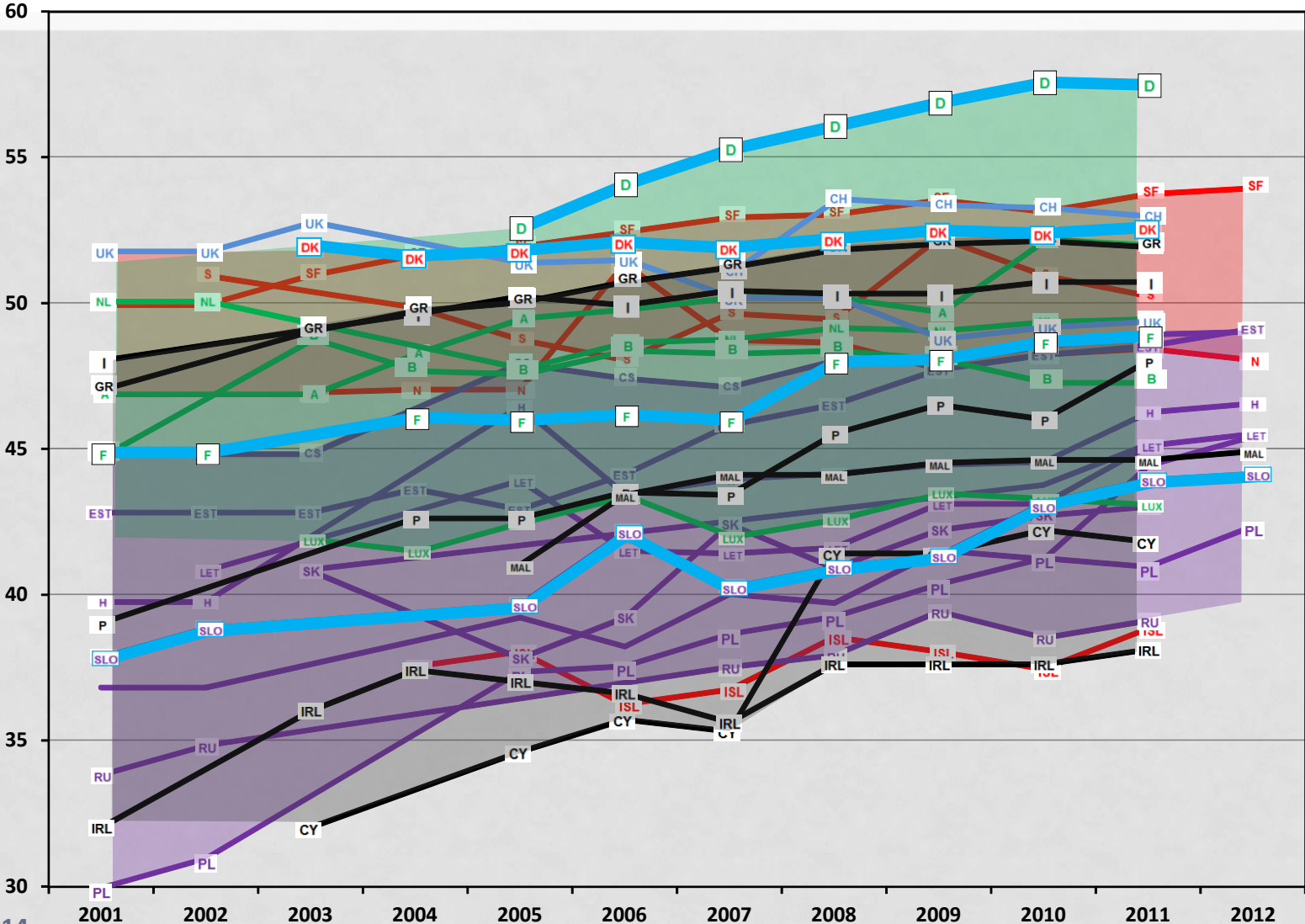
Mean age at first birth, 2009



Single Person households



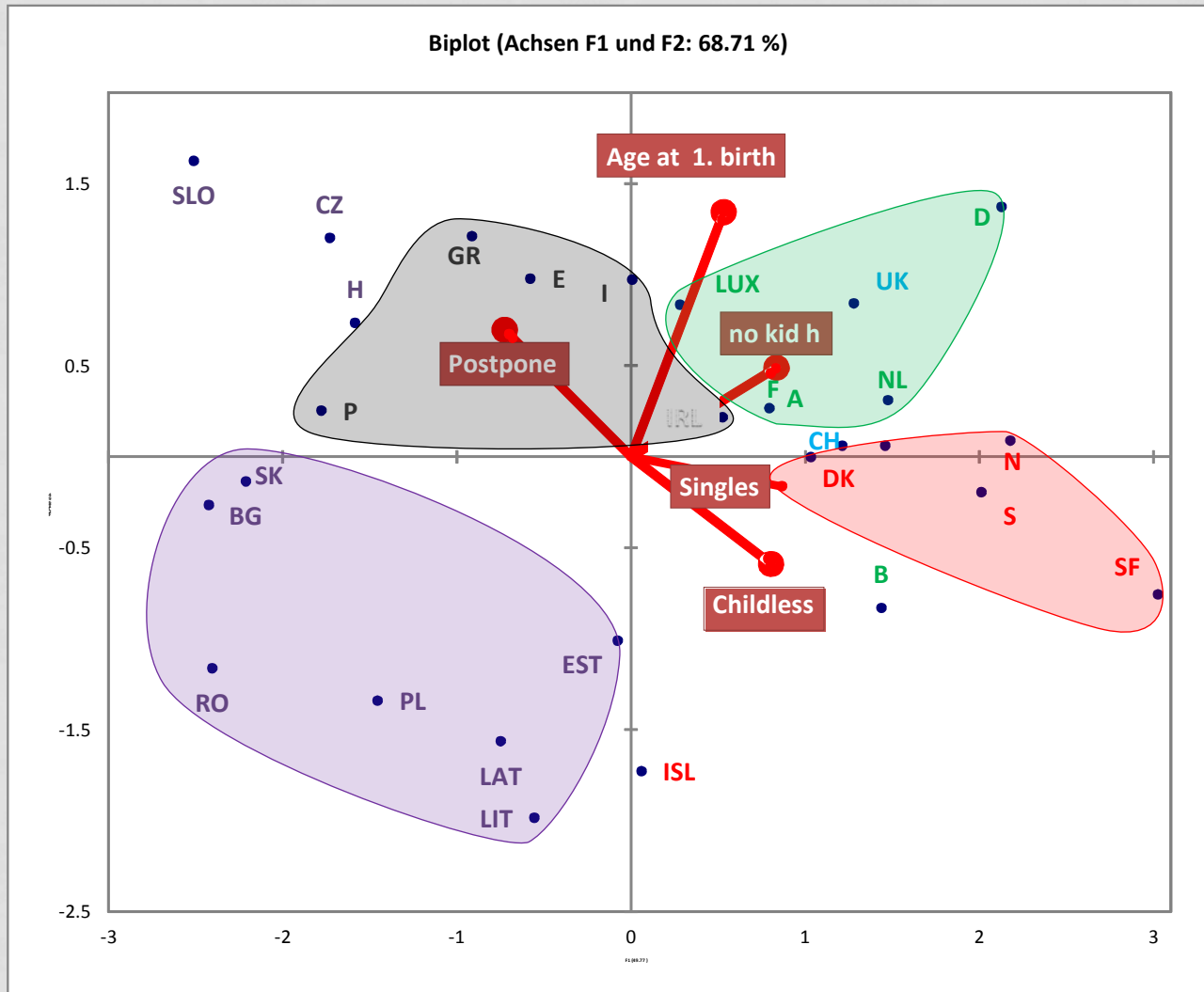
# THE NON-FAMILY SECTOR IN EUROPE



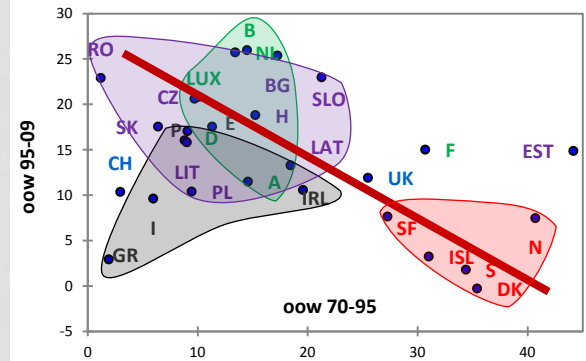
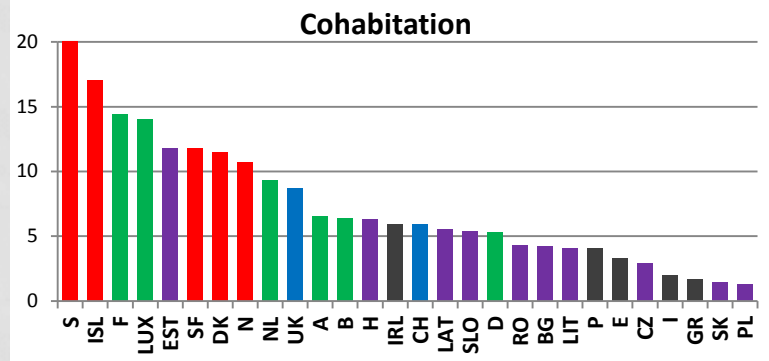
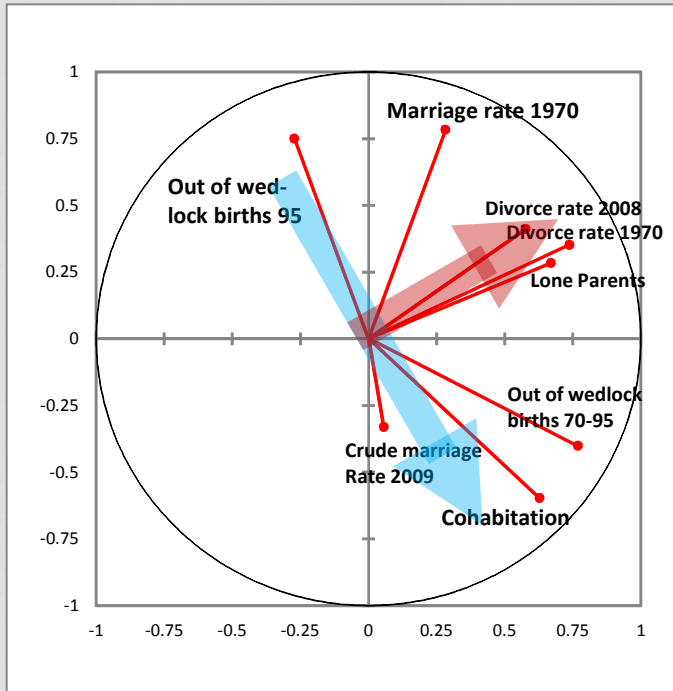




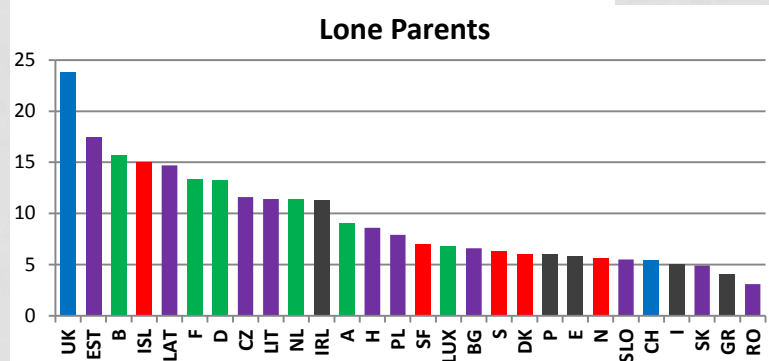
# POLARIZATION 1: CHILD/NO-CHILDREN



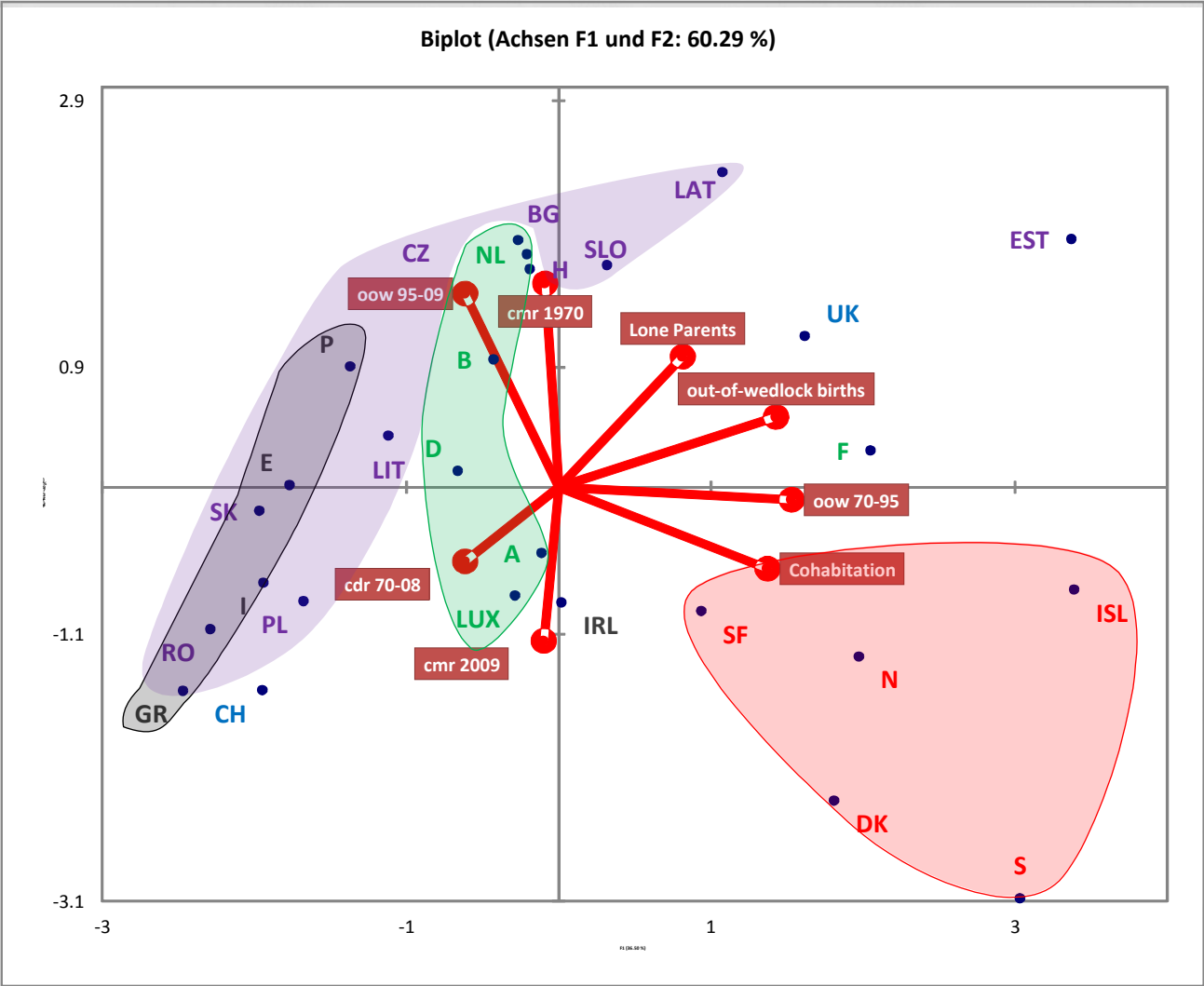
# POLARIZATION 2: MARRIAGE/NO-MARRIAGE



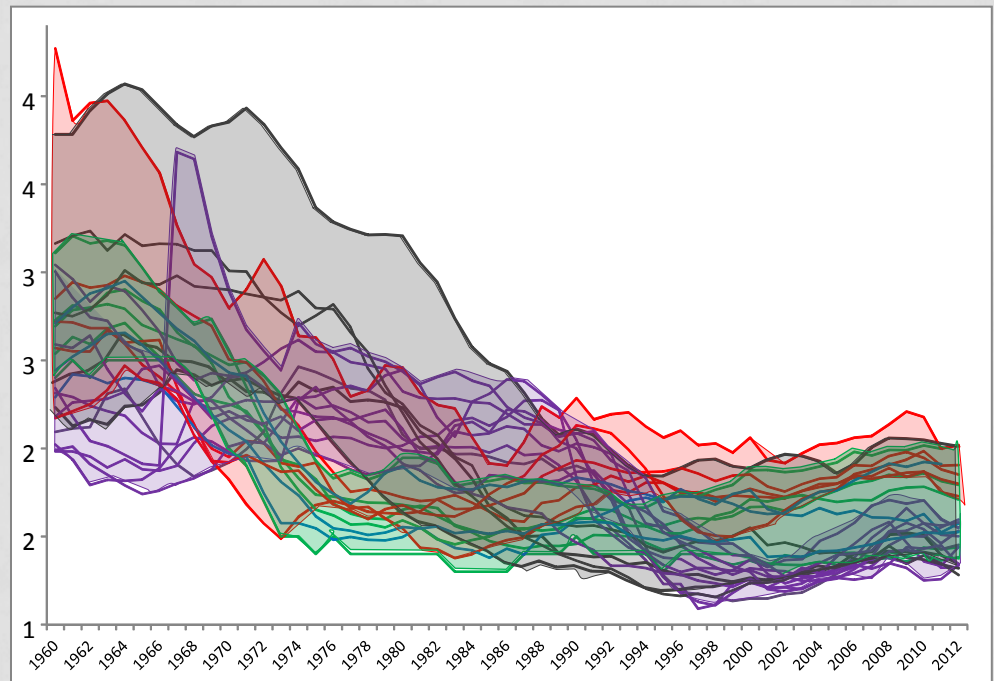
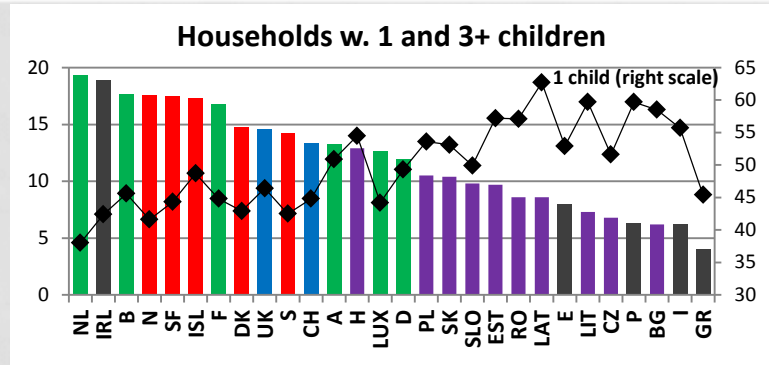
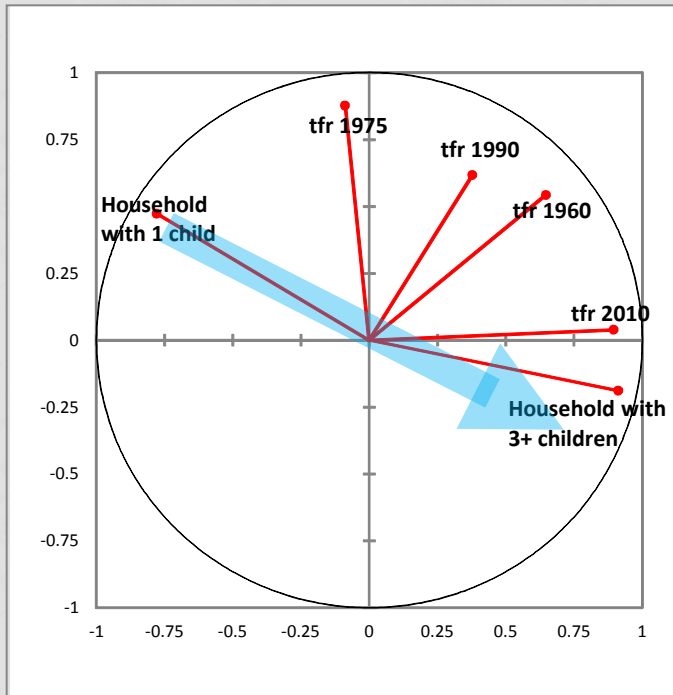
Out-of-wedlock birth 1995-2009 by Out-of-wedlock birth 1970-95



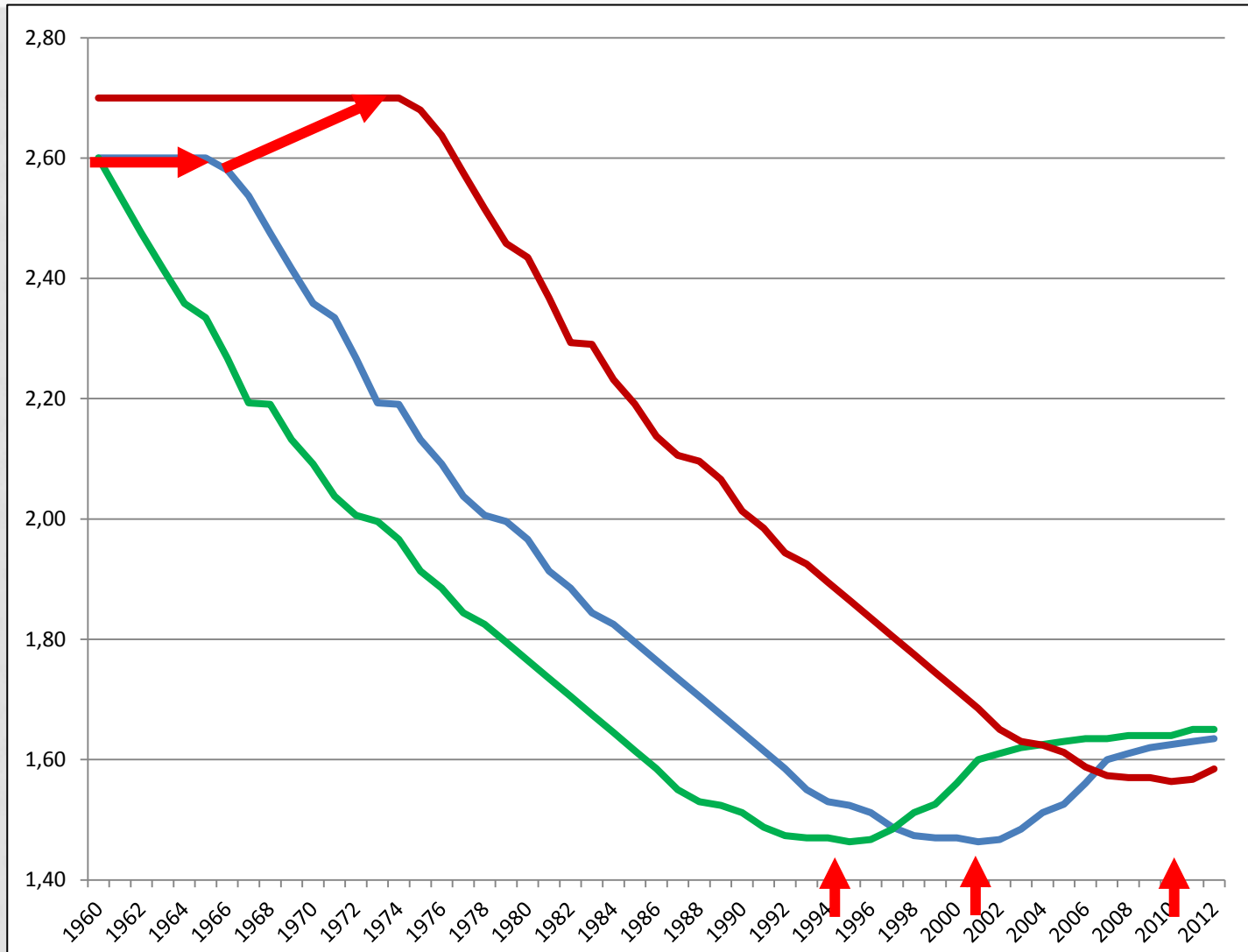
# POLARIZATION 2: MARRIAGE/NO-MARRIAGE



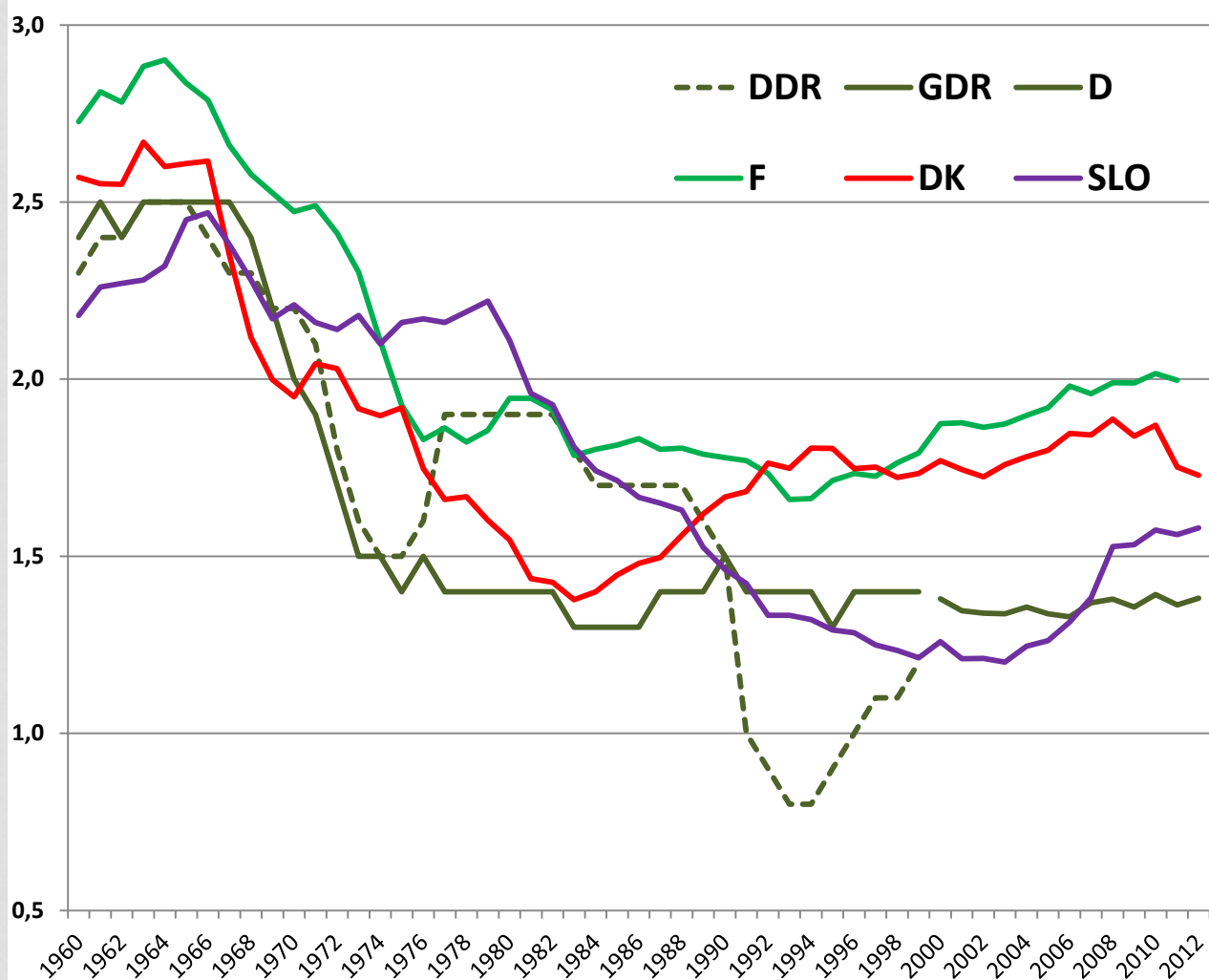
# THE PROCESS OF FERTILITY



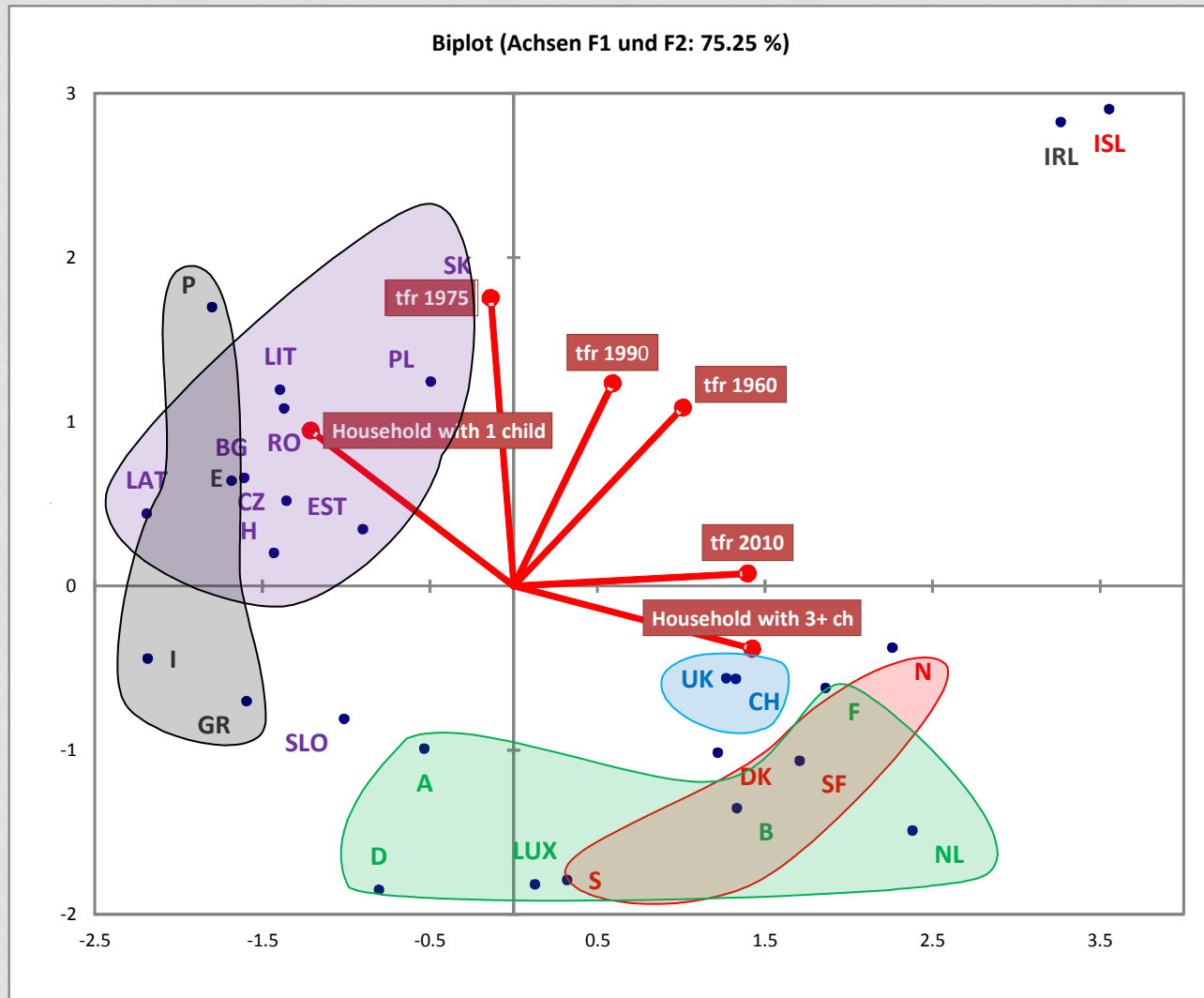
# WHAT MEANS LOW FERTILITY?



# FERTILITY IN THE COUNTRIES OF OBSERVATION

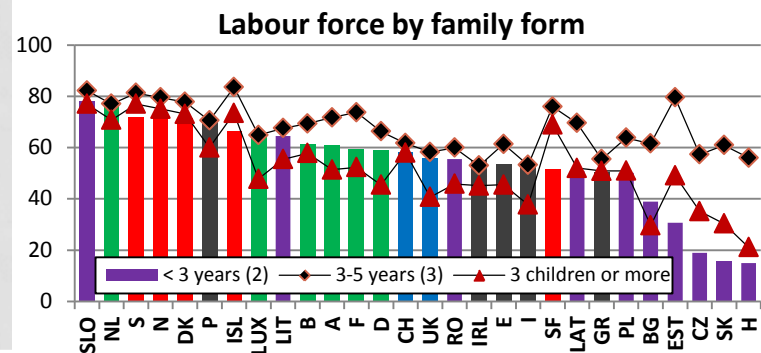
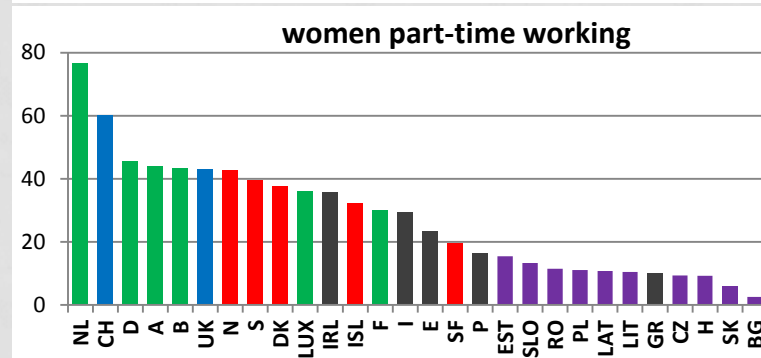
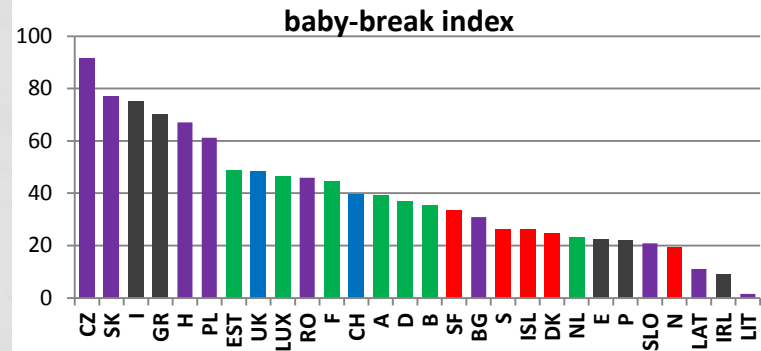
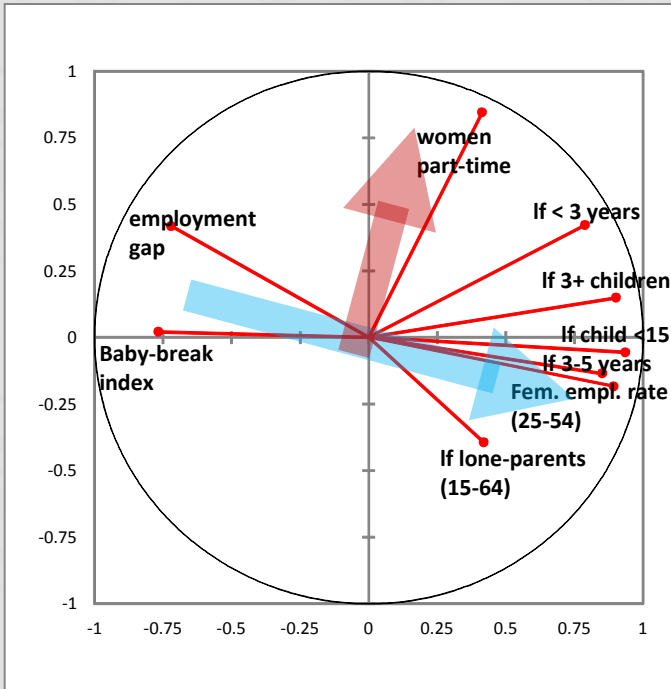


# THE PROCESS OF FERTILITY



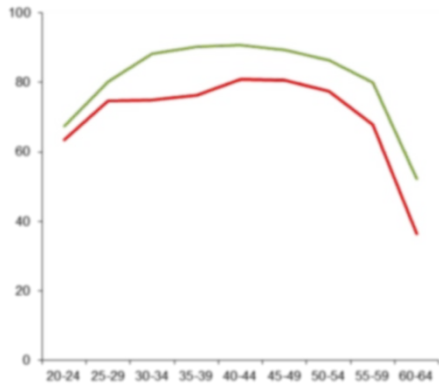


# GENDER INEQUALITY AND LABOUR FORCE

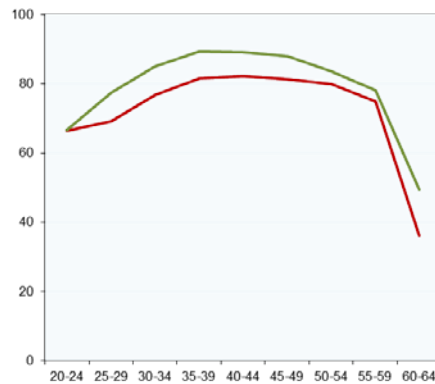


# AGE-SPECIFIC EMPLOYMENT RATES AND GROUPED WORKING HOURS

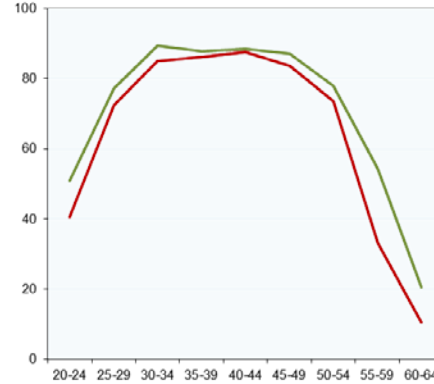
Germany



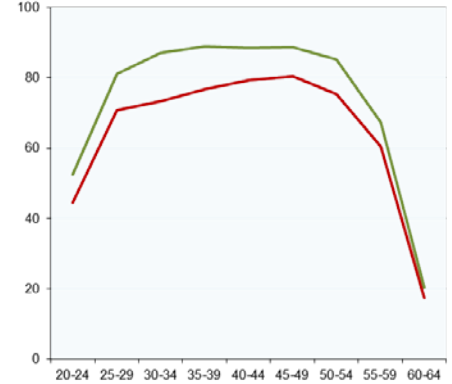
Denmark



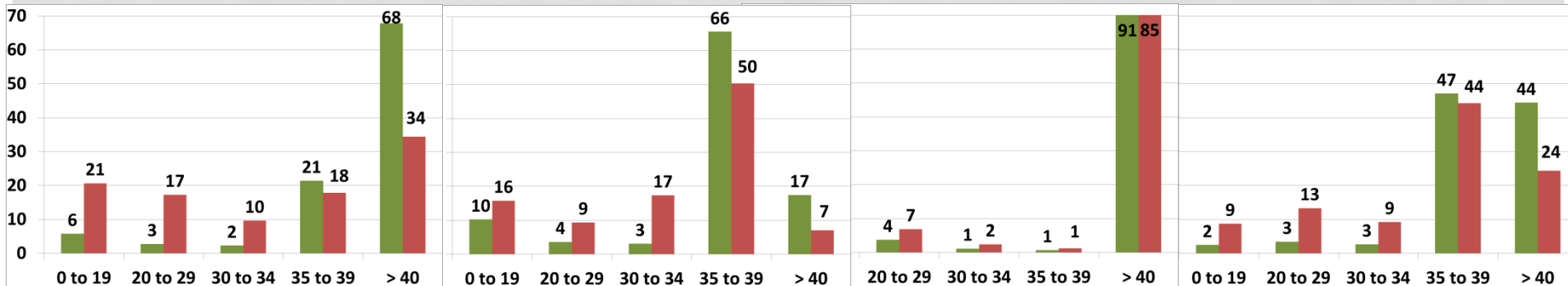
Slovenia



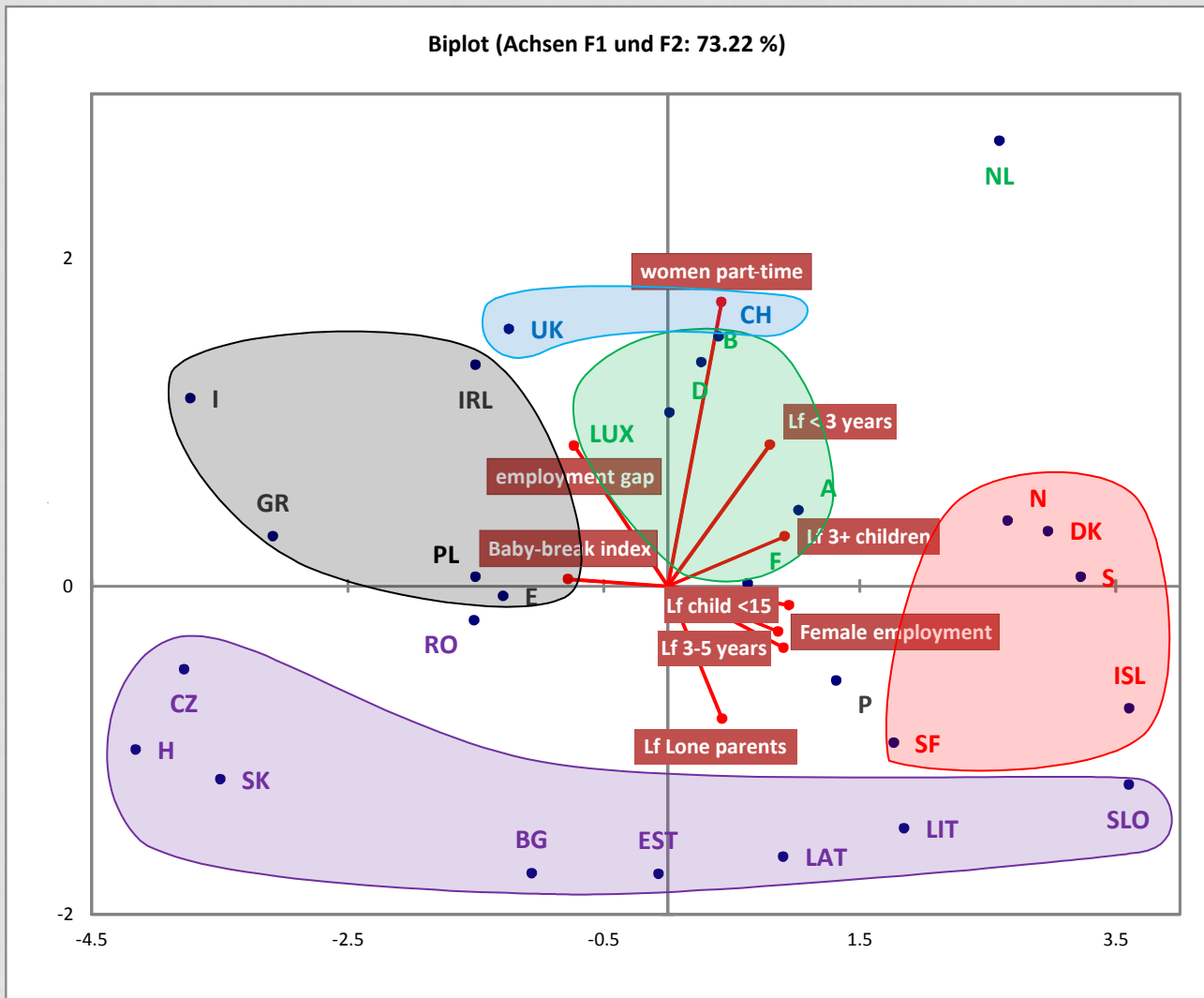
France



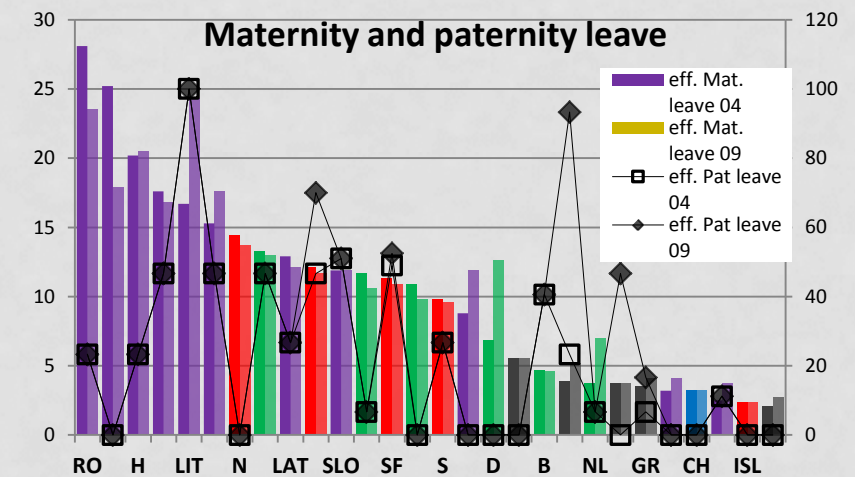
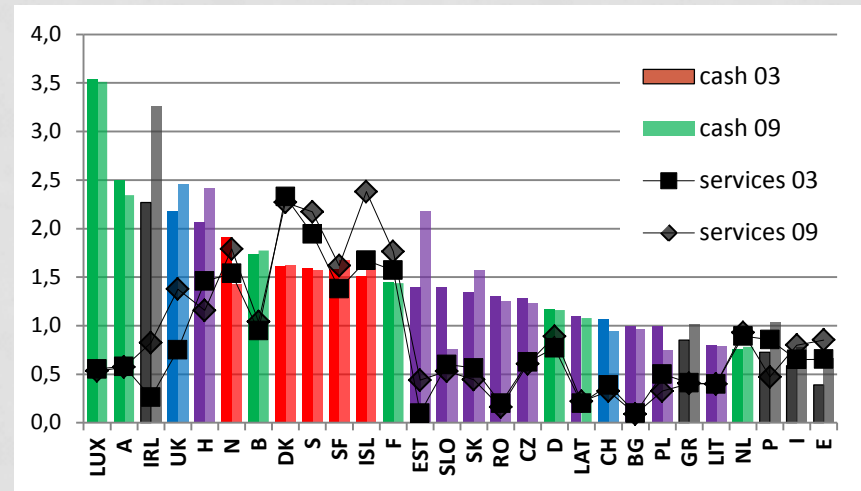
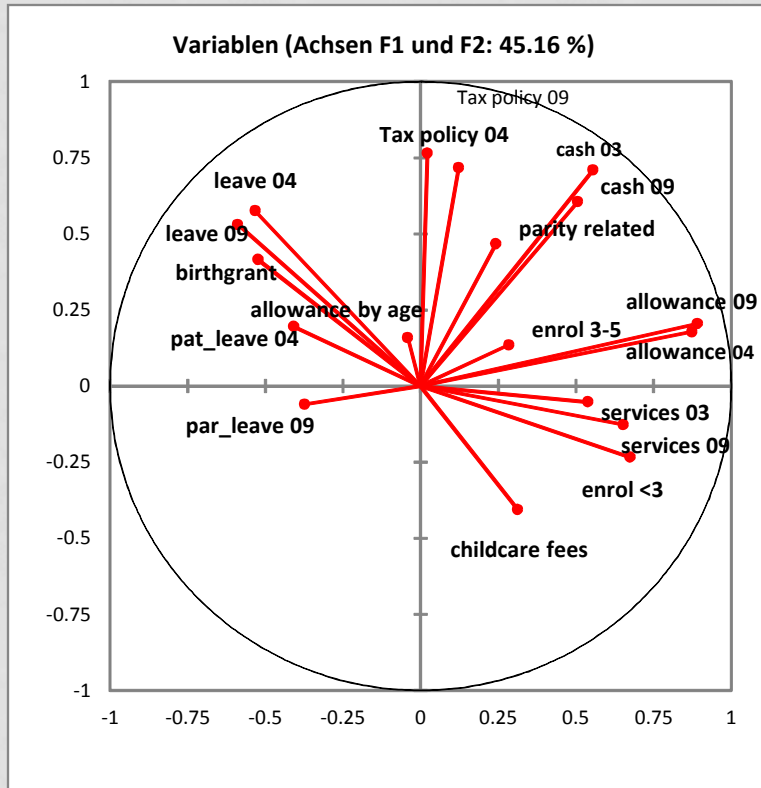
## Working hours



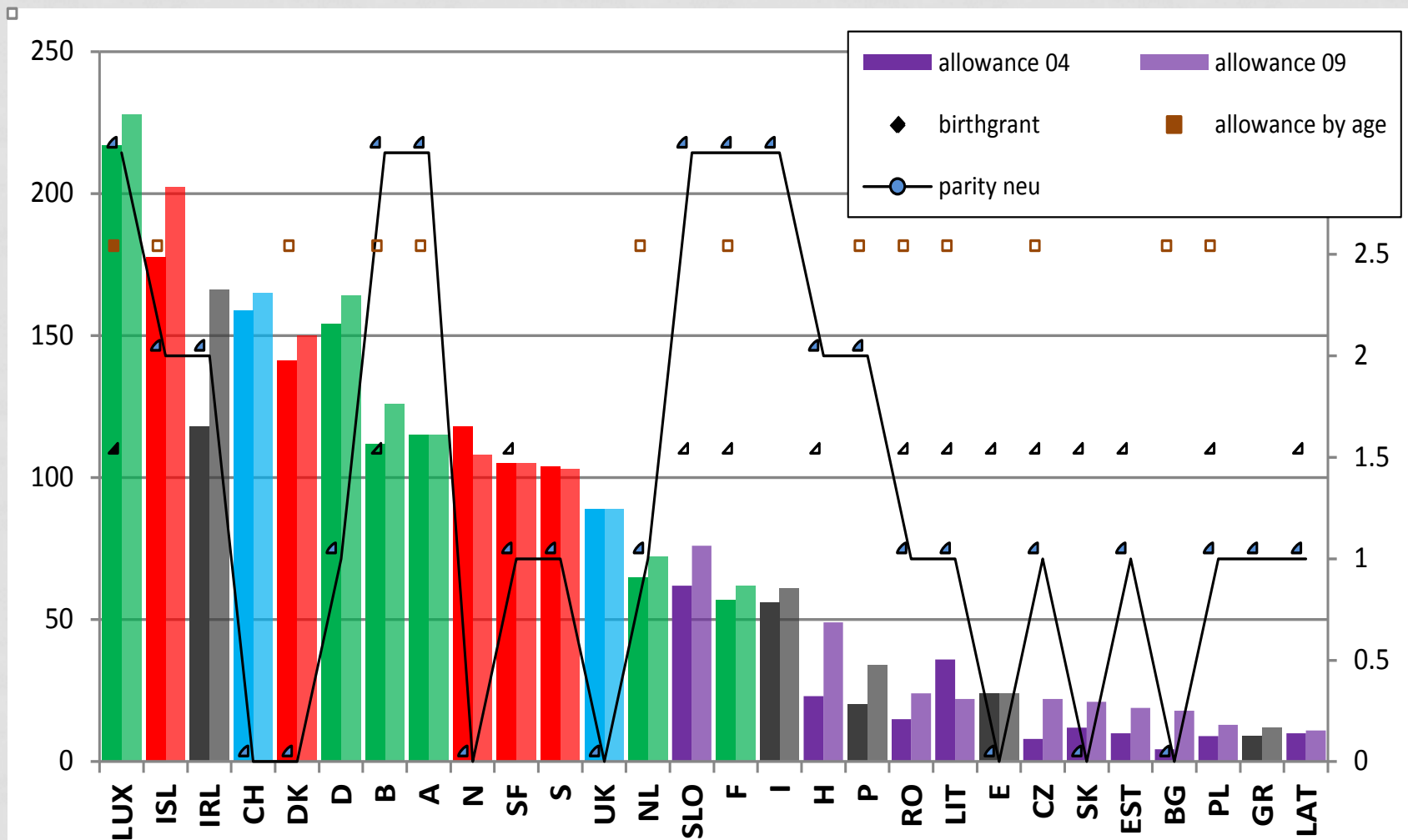
# GENDER INEQUALITY AND LABOUR FORCE



# FAMILY POLICIES

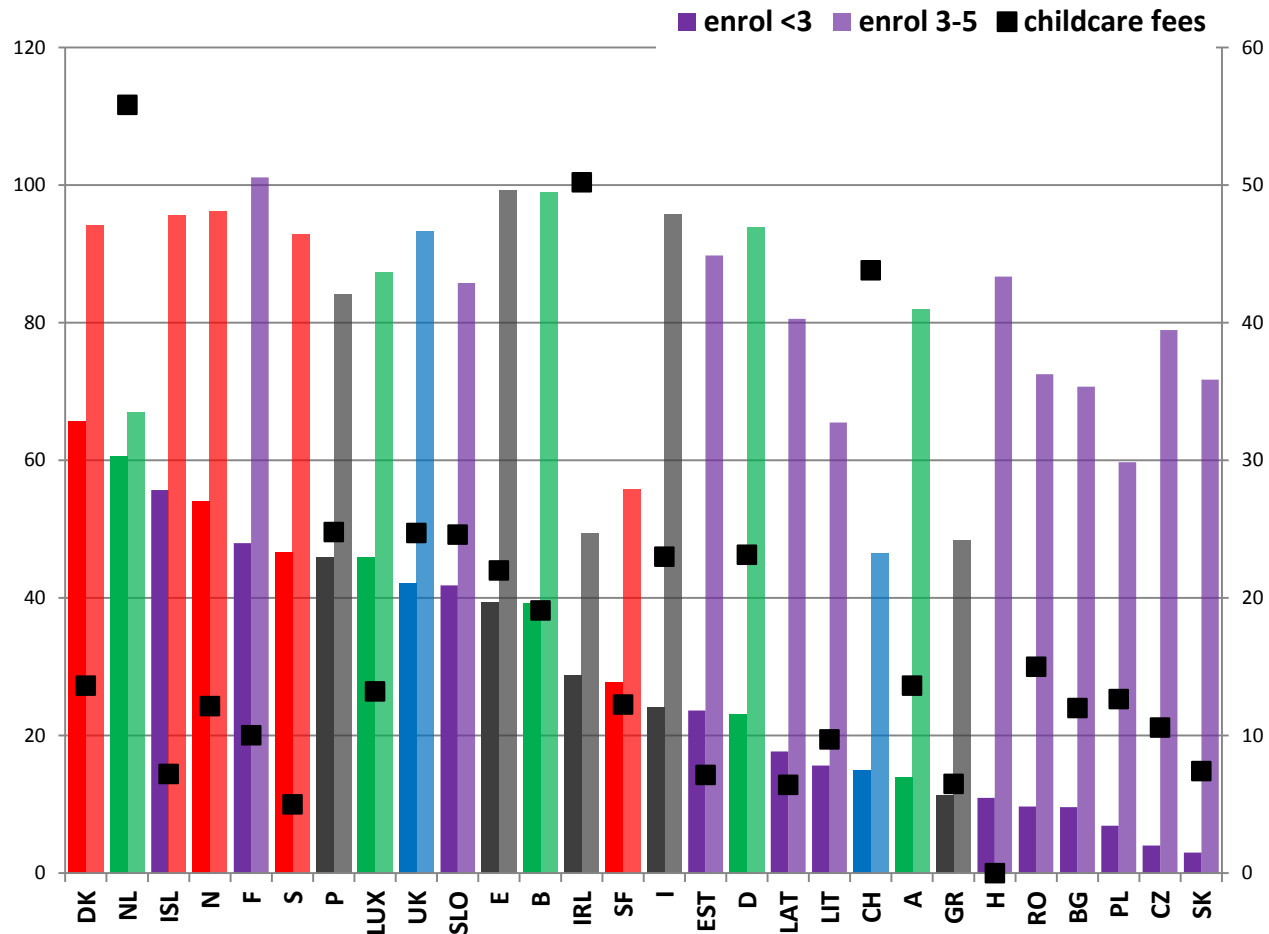


# THE PRONATALIST DIMENSION



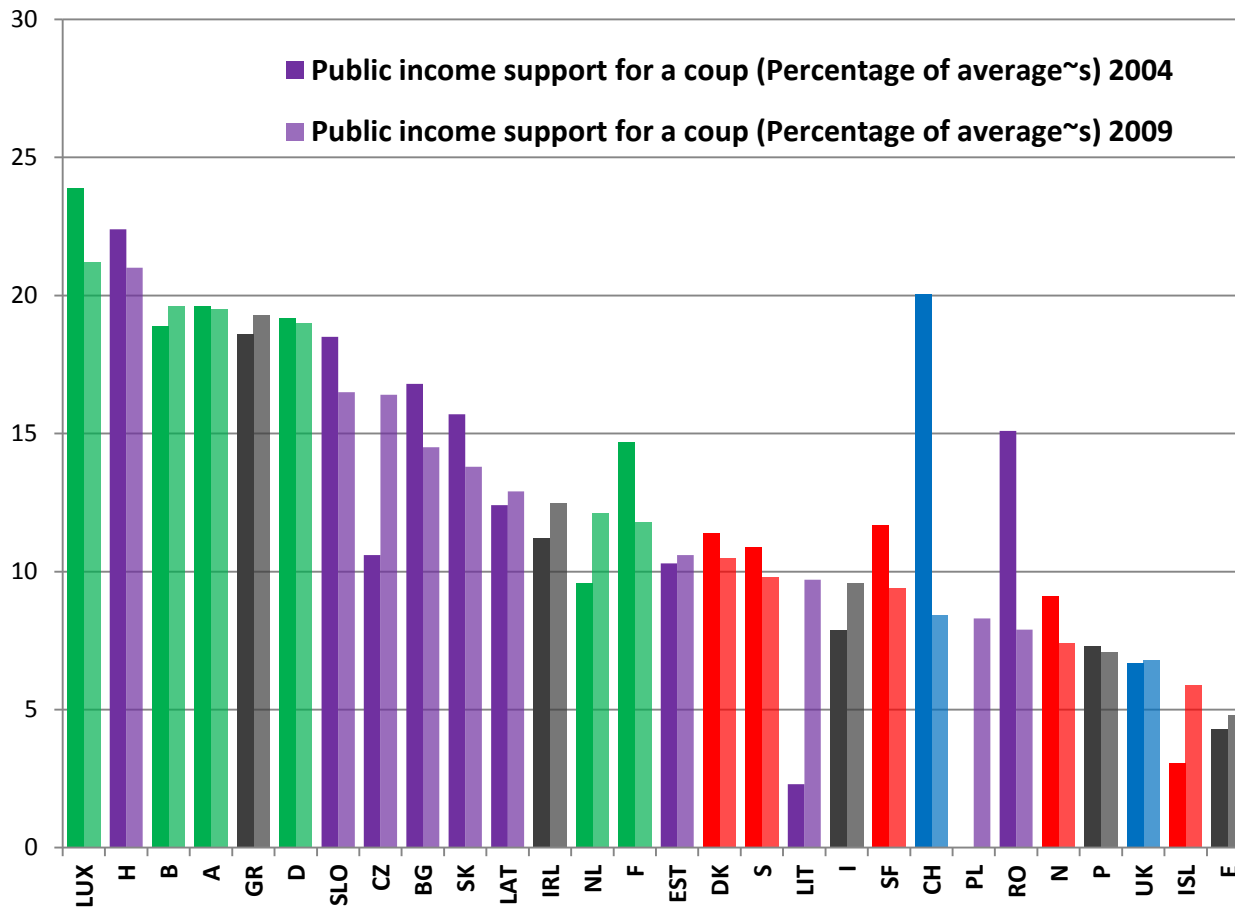
# CHILD-CARE POLICIES

## Enrolment rates and the costs of child-care



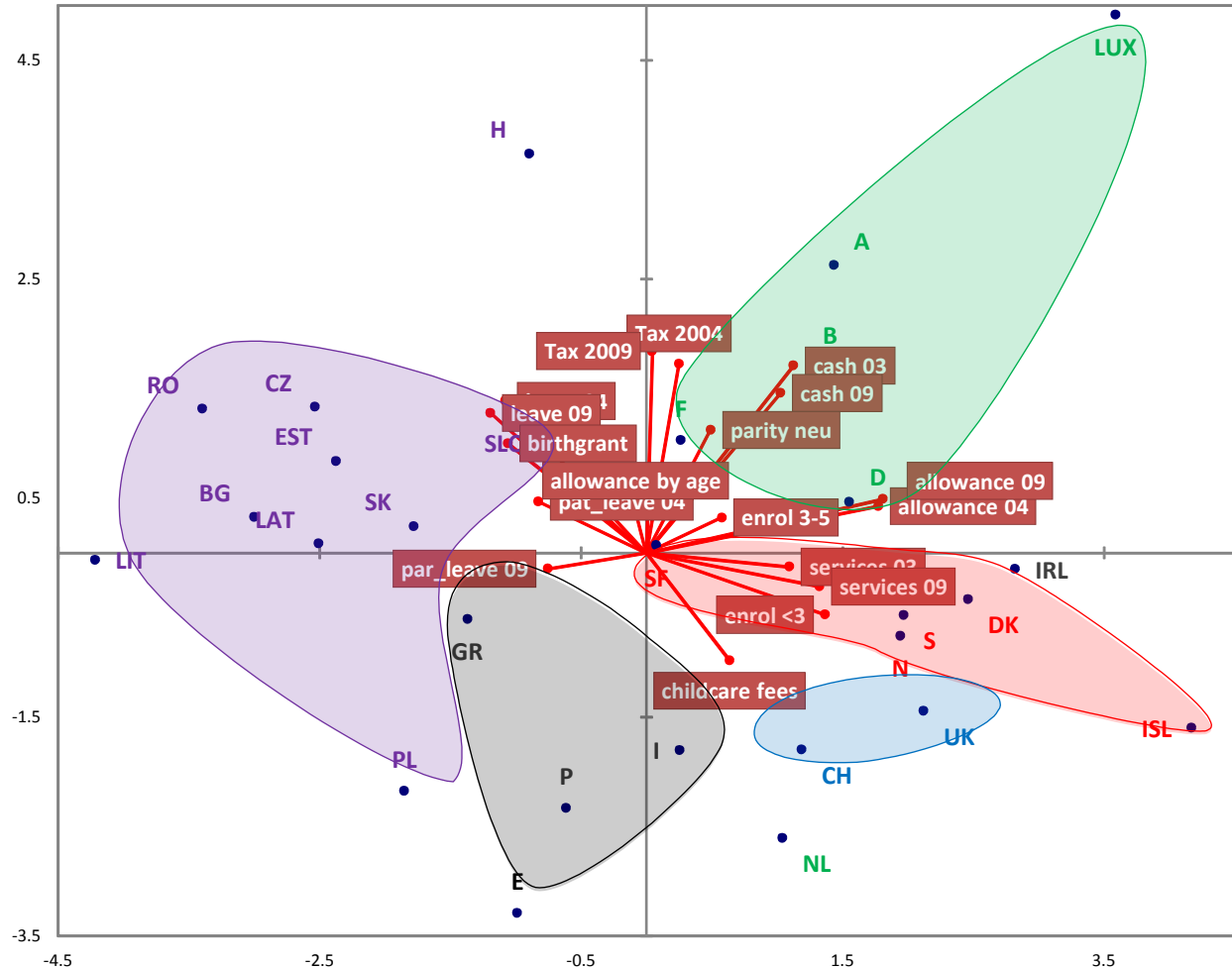
# TAX-RELATED FAMILY POLICY

## Exoneration of families via taxes

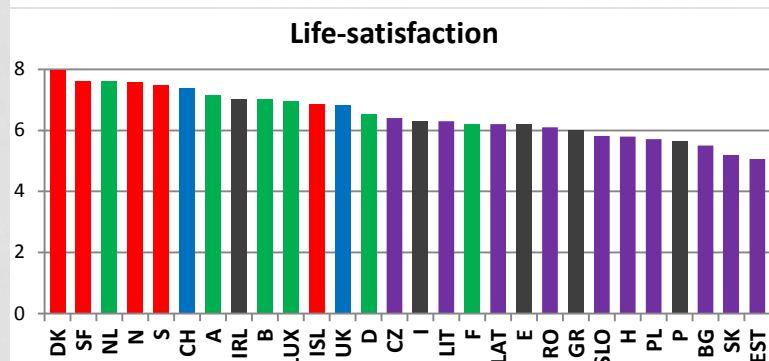
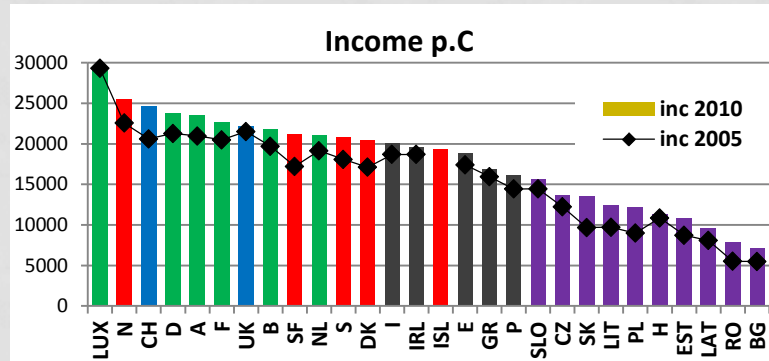
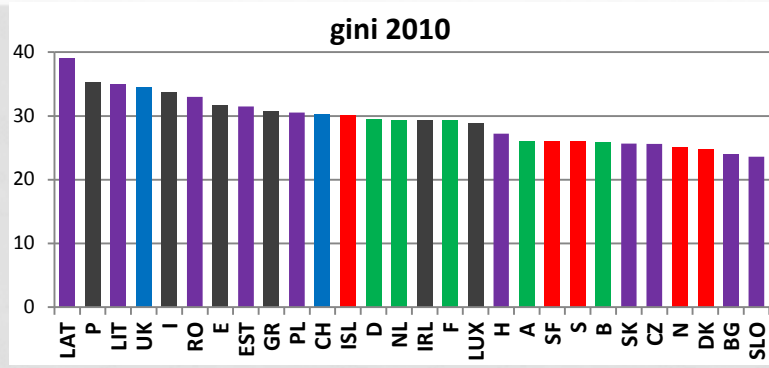
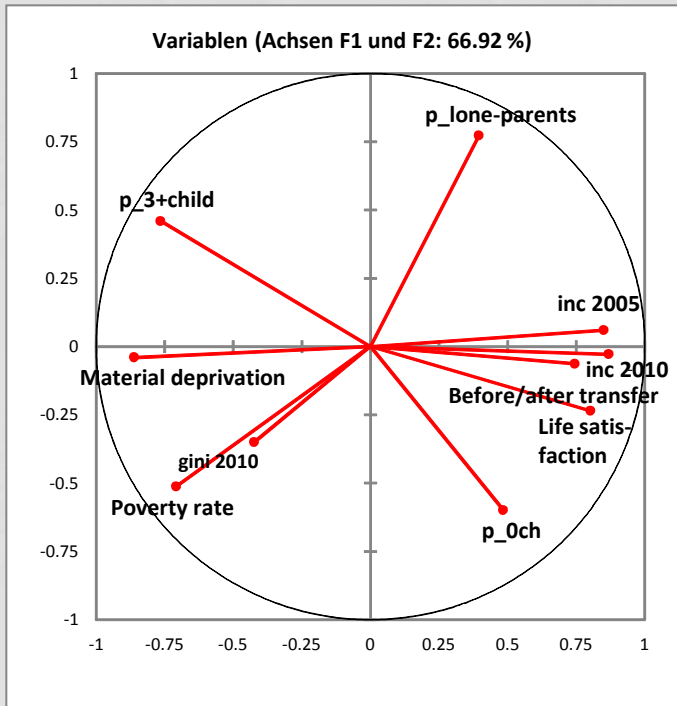


# FAMILY POLICY

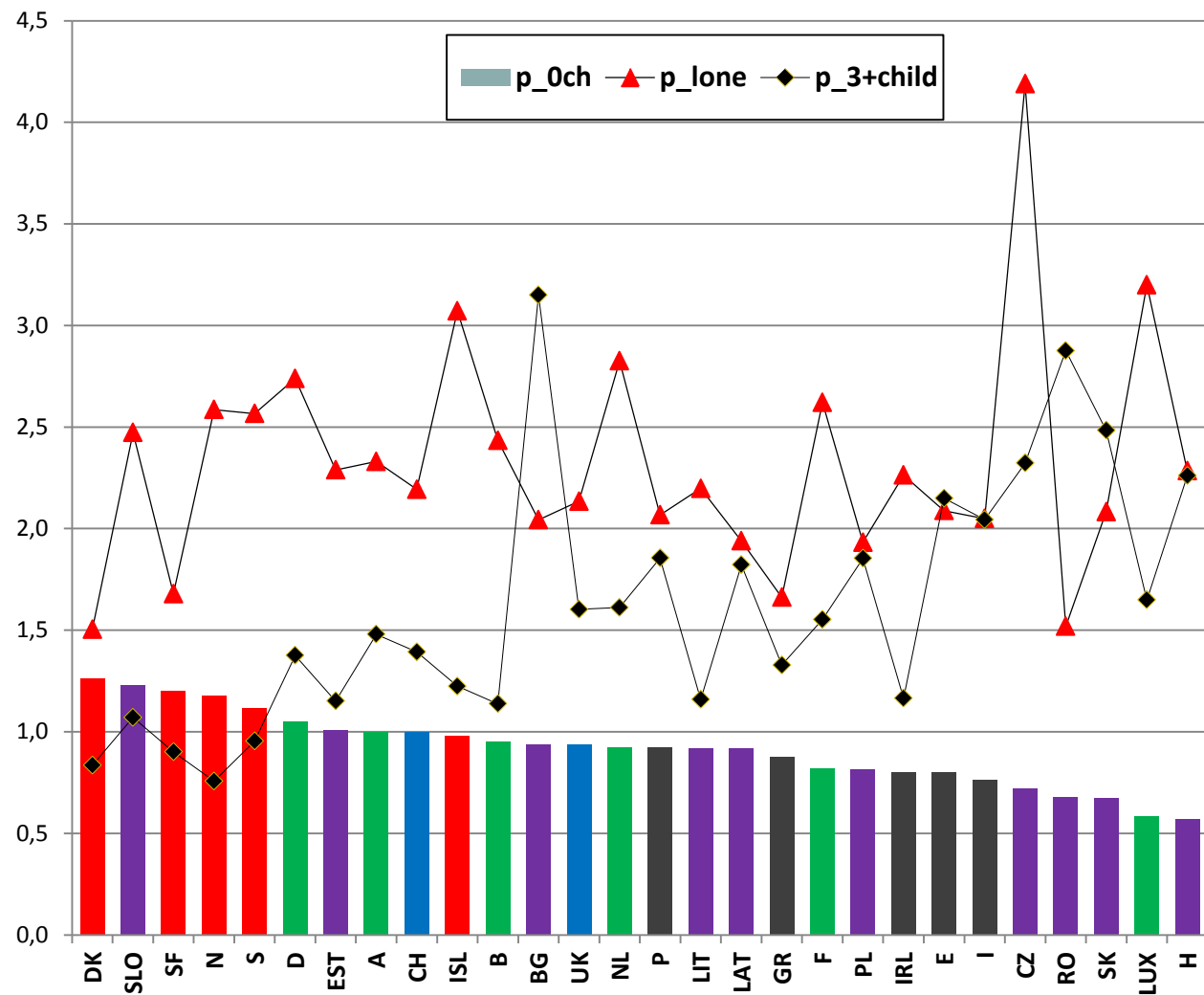
Biplot (Achsen F1 und F2: 45.16 %)





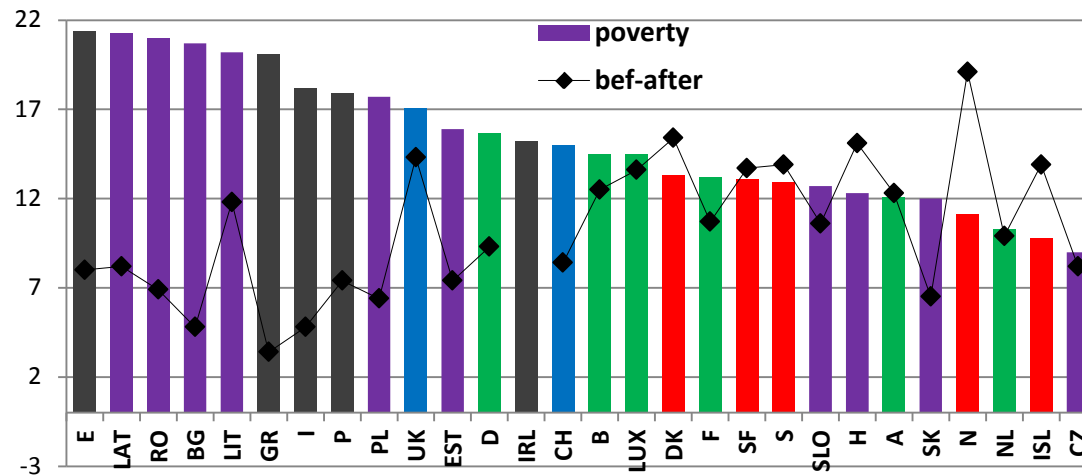


# POVERTY OF FAMILIES (DEVIATION FROM TOTAL POVERTY RATE IN PER CENT)

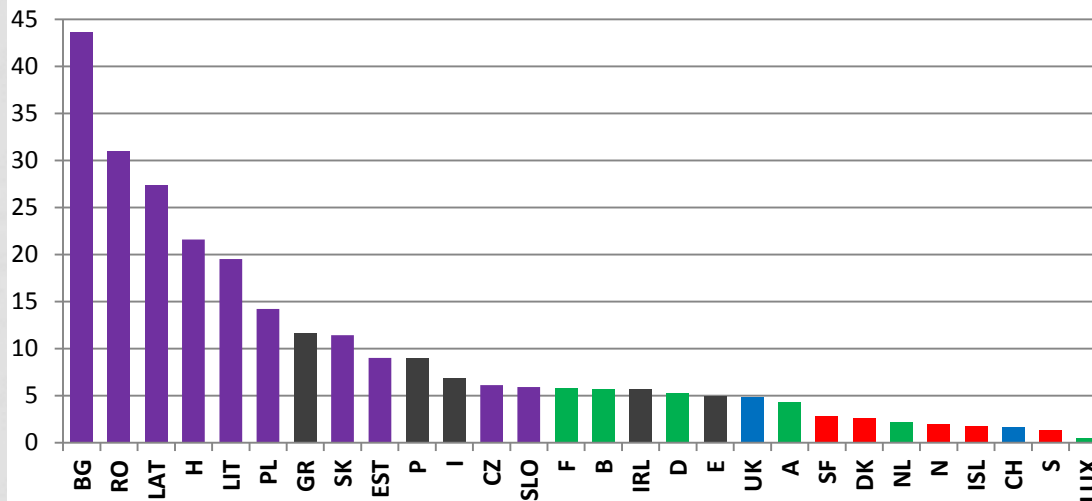


# IMPACT OF TRANSFERS AND DEPRIVATION

Poverty rate (difference before/after transfers)



Material deprivation



# THE OUTCOME: POVERTY OF FAMILIES

